

What is Youthreach

- A Principal national response targeting those who have left school early
- A National programme with local delivery
- Three Phases –
 - Engagement, Foundation and Progression
- It is Inter Departmental and inter agency, .
- There are 180 centres of education and training; including YRCs, CTCs,STTCs and Justice...
- Small out of school units with fulltime and part-time staff
 - Staff: Coordinators/Director, Resource Persons and Teachers
- Programme delivered by VECs- can make decisions as to deployment of resources



Why Youthreach is Necessary

- Youthreach was established in 1988 to meet the objectives of the 1984 social guarantee.
- Its remit was to offer basic education and training to young people who found themselves out of school with little or no qualifications.
- Youthreach was designed to be a national programme with local delivery
 - Therefore the service delivered could be designed around the needs of the local community; which has proven to be a great success and contributed to the longevity of the programme



The History of Lucan Youthreach

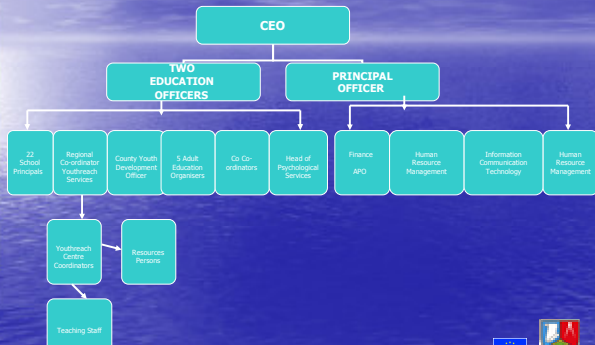
- Lucan Youthreach was established in 1995 in the old vocational school on Esker Hill under the umbrella of the County Dublin Vocational Education Committee
- Its original remit was to deliver training and education
 - Due to the changing demographic of young people attending the centre and changes in legislation, Lucan Youthreach moved from a training establishment to a centre of education
- Lucan Youthreach now run a wide variety of programmes offering FETAC certification at level three and level four



Lucan Youthreach Centre



Where Youthreach fits in within the Co Dublin VEC Management Structure



Presented Difficulties in 2005

Total Number of Participants	2739
Literacy and Numeracy Problems	864
Dysfunctional Family Background	1377
Substance Misuse Problems	756
Need for Sustained Psychological Support	829
Specific learning Needs	490
Physical Disability	37
Intellectual Disability	136
Poor Physical Health, e.g. persistent illness/ Poor Nutrition	468
Cautioned by Junior Liaison Officer (JLO)	483
On Probation	145
Two or More of the Above	704

What Lucan Youthreach Has to Offer

- Lucan Youthreach combine educational and vocational subjects in a supportive and student centred environment
- Teachers work towards integrating literacy, numeracy and indeed guidance into their subjects
- The approach overall is a holistic one based on individual needs

Our Students

Guidance in Lucan Youthreach

- Guidance is implemented in two ways
- Teachers introduce guidance into their programmes
- Guidance is also offered in a structured manner; on a one to one and small group basis



Our Guidance Room



The Future

- Lucan Youthreach is looking to the future. With the completion of a purpose built crèche on the premises we are now extending our programme to include Lone Parents
- This will expand our guidance service and offer an opportunity to affect real change in the lives of some of the most vulnerable people in our society



The New Crèche



I hope you have enjoyed a quick tour of our centre.

Please feel free to ask any questions you may have.

Go Raibh Mhaith Agat
Thank You

